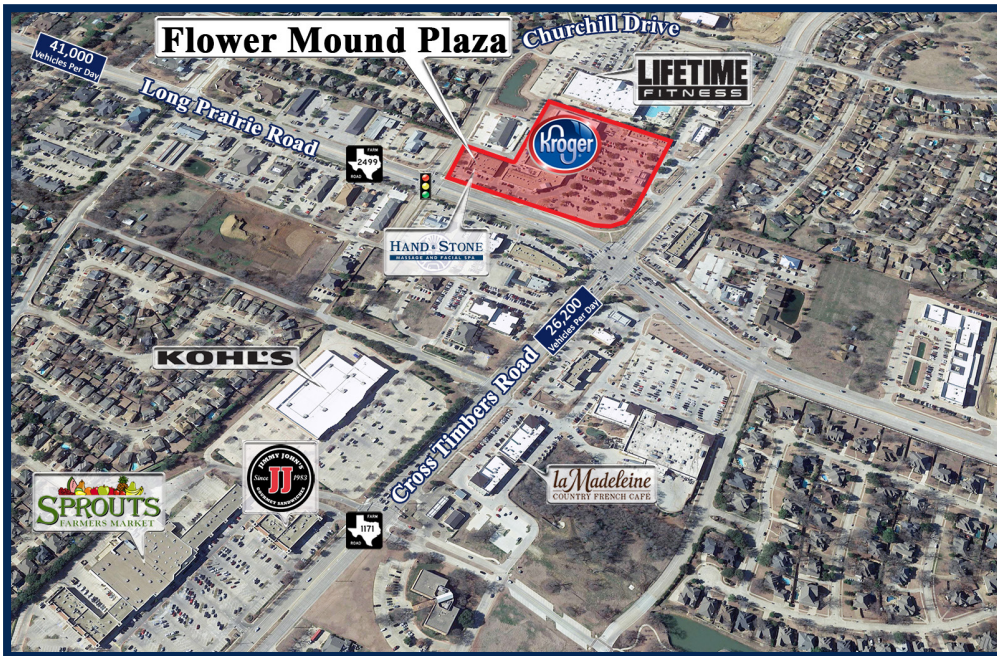


GLAZER

Properties

Flower Mound Plaza

3501 Long Prairie Road, Flower Mound, Texas 75022



Property Description	
Gross Leasing Area:	11,981
Zoning:	PD-28
Traffic Count:	67,200 Vehicles Per Day

Demographics			
	1 Mile	3 Miles	5 Miles
Population	12,259	93,002	179,287
Households	4,075	31,226	62,303
Average Household Income	\$127,515	\$124,172	\$110,783

TENANTS INCLUDE

1. Hand and Stone Massage
2. DeLux Nails
3. Tobacco & Vapor
4. Available 2,011 sq. ft.
5. School of Rock
6. J. Kin Donut



LEASING INFORMATION: (585) 359 - 3000 • info@glazer.com